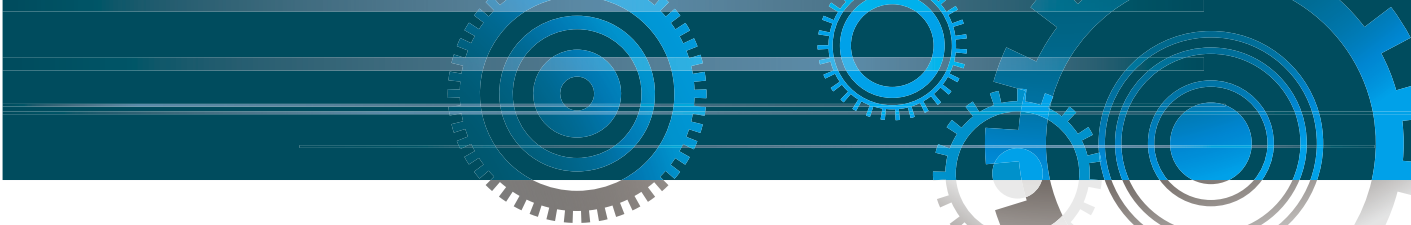
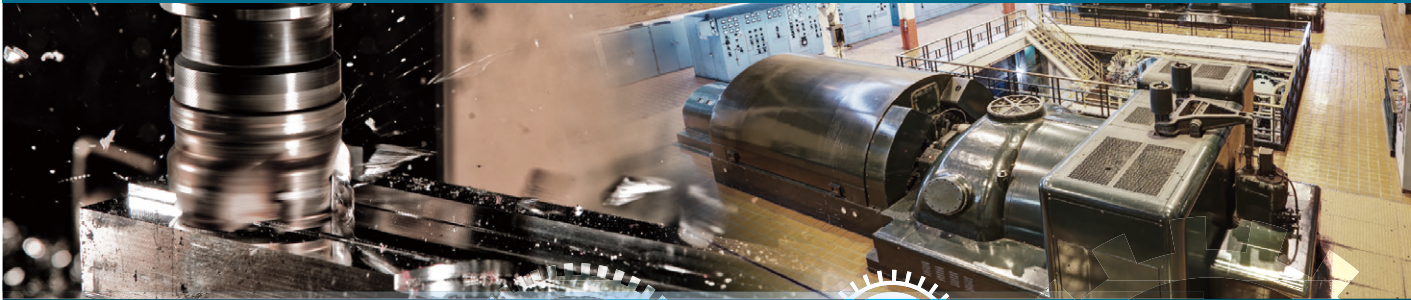


VimoNet X4

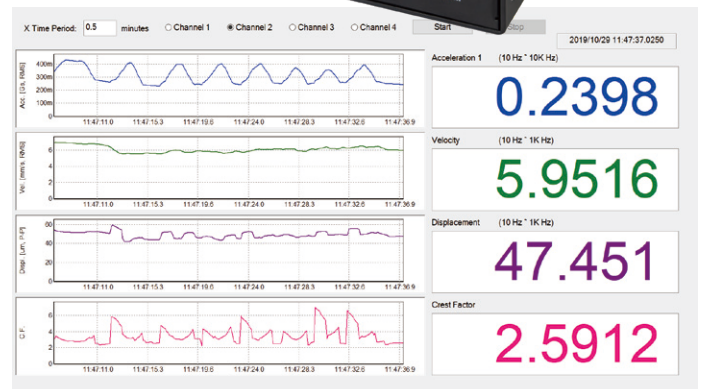
4-CH Predictive Maintenance Machine Vibration Monitoring / FFT Analyzer



VimoNet X4-TM

Test & Measurement Simultaneous FFT Analyzer

- 4-CH sync. analog input
- RPM (TTL) input
- Ethernet data translation:
 - > Overall/Time waveform/Spectrum
 - > Sync. Multi-VimoNet, Max: 32-CH
- With NOVIAN: FFT Analyzer
- Online data acquisition and predictive maintenance.



Condition Monitoring Online Data Transmitter

- 4-CH sync. analog input
- RPM (TTL) input
- Multiple digital and analog I/O interface, Including:
 - > 8-CH digital input / 8-CH analog output
 - > 8 sets of overall analog output
 - > 1-CH collision detection (response time < 1ms)
- Online condition monitoring and control for intelligent manufacture.
- Connect to data center for big data.

VimoNet X4-CM



Feature

- **Multi-Channel Dynamic Measurement**
4-CH simultaneous analog input, compatible to accelerometer, microphone, etc.
- **Digital Data Processing**
Local real-time computing, data storage, and transmit to data center via ethernet.
- **Test & Measurement**
Remote Mode : FFT Analyzer : Standalone Mode : Data Recorder & Transmitter.
- **Condition Monitoring**
Programable multiple I/O interface, connect to controller for intelligent manufacture.

Specification

		VimoNet X4-TM	VimoNet X4-CM
Type		Test & Measurement / FFT Analyzer	Condition Monitoring / Data Transmitter
Analog Input	Channels/Input Range	4-CH / $\pm 5V$ ($\pm 10V$ optional)	
	Coupling	AC / DC / IEPE (4mA , 20V)	
	BW/Sampling Rate	20 kHz / 102.4 kS/s	
	Resolution/Noise	24 bits / $< 55\mu V_{rms}$	
	Input impedance	1M Ω	
RPM (TTL) input		1-CH (max frequency: 10kHz)	
Digital Input		—	8-CH, 0~24V
Analog Output		—	8-CH: 4~20mA or 0~10V
Overall Limitation Detection	Channels	—	8-CH + 1-CH collision detection
	Contact Rating	—	0.1A 24VDC
	Response Time	—	$< 10ms$ (collision detection $< 1ms$)
	Contact States	—	Normal close
Digital Data Transmission		Ethernet, RJ45 x 2 pcs	
USB	TYPE-A	USB Thumb	
	Micro-AB	+5V Power Supply, Data	
Multi-VimoNet Synchronized		Via fiber (SC-1310nm), Maximum Device & Distance: 8 sets, 1km	
System	Processor	OMAP-L138@456MHz	
	Storage	32GB	
	Data	Time Waveform, Spectrum, Overall (ACC, VEL, DISP: ISO-TR-17243, ISO-10816)	
	Operating Temp.	$-10^{\circ} \sim 60^{\circ}C$	
	Dimension	173mm x 113mm x 56mm	163mm x 108mm x 55mm
	Mounting	DIN RAIL type	
	LED	Green: IEPE on; Red: Error	
	Power Consumption	4W	8W
	Power Type	DC+24V	DC+24V



G-TECH www.g-tech-inst.com

G-TECH INSTRUMENTS INCORPORATION

HSINCHU ☎ 886-3-5722555 ☎ 886-3-5722335
TAICHUNG ☎ 886-4-23504138 ☎ 886-4-23504135
TAINAN ☎ 886-6-3110188 ☎ 886-6-3120292